

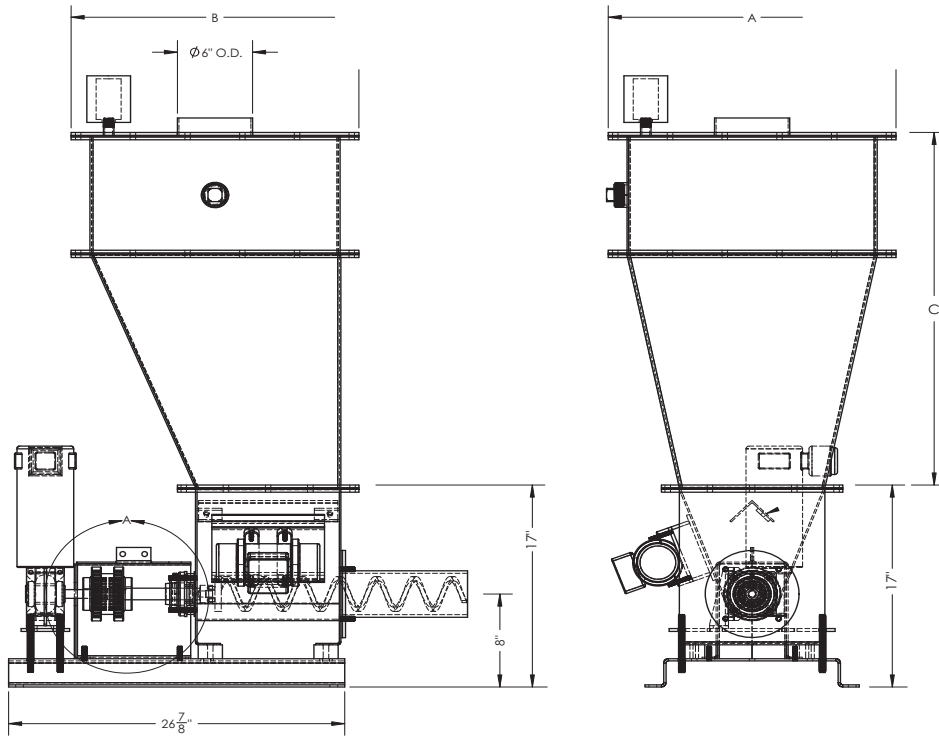
The CON-V-AIR Solutions volumetric screw feeder is designed to serve the needs of the dry chemical addition in the water treatment industry. Designed for continuous duty and high precision yet highly adaptable by having the same frame for all screw sizes.

Designed for hydrated lime, quick lime, potassium permanganate, sodium silicofluoride, soda ash, calcium carbonate & powder activated carbon.

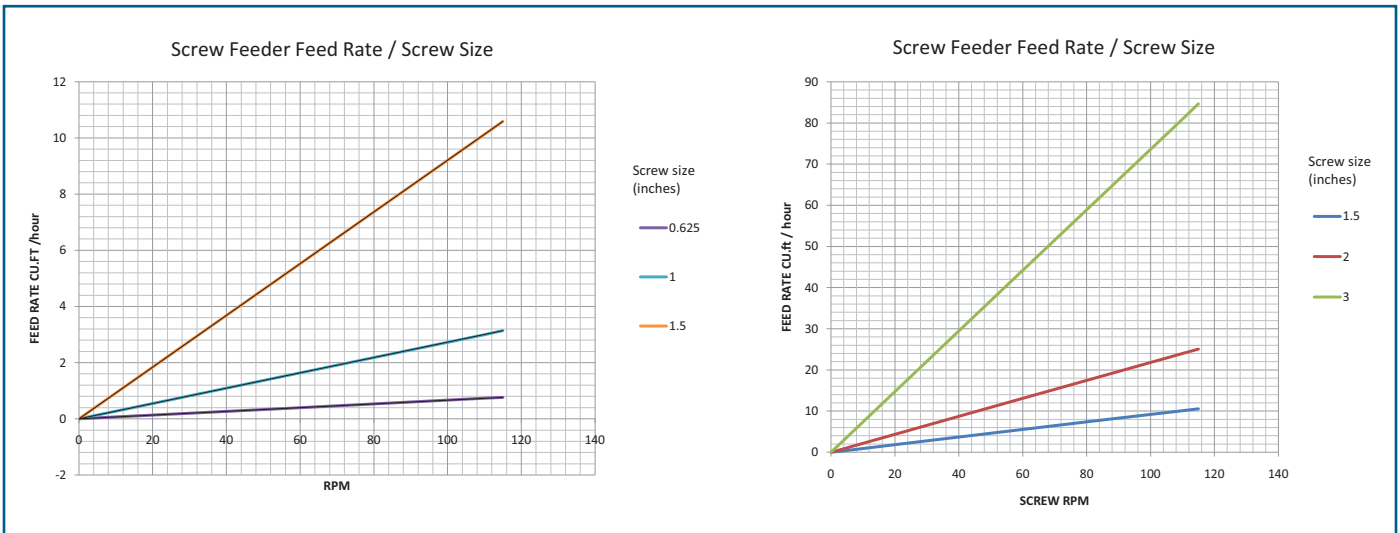


Characteristics

- Standard SS304 construction, 316 zinc/carbon steel offered as an option
- Optional load cell platform mounting
- Feed screw overlap and vibrator for precise and continuous feeding
- Variable-speed motor with linear feeding output
- All models operate on a 1/2 HP motor for the screw (DC or VFD) and a 1/6 HP 120V vibrator



HOPPER DIMENSIONS			
	A	B	C
1 pi ³	12"	12"	12"
3 pi ³	23"	23"	21"
5 pi ³	23"	23"	32"



		Maximum Dosing RATE (kg/min)											
Bulk Density #/cu.ft.	Bulk	90 VDC Motor						460 or 575 V / 3ph motors					
		SCREW SIZE						SCREW SIZE					
		0,625	1	1,5	2	2,5	3	0,625	1	1,5	2	2,5	3
Hydrated Lime	25	0,063	0,258	0,872	2,066	4,035	6,973	0,145	0,594	2,005	4,752	9,281	16,037
Potassium Permanganate	95	0,240	0,981	3,312	7,851	15,333	26,496	0,551	2,257	7,618	18,057	35,267	60,941
Activated Carbon	20	0,050	0,207	0,697	1,653	3,228	5,578	0,116	0,475	1,604	3,801	7,425	12,830
Sodium Silico Fluoride	55	0,139	0,568	1,917	4,545	8,877	15,340	0,319	1,307	4,410	10,454	20,418	35,282



CON-V-AIR inc
3510 1re Rue, Saint-Hubert, QC J3Y 8Y5

Phone: 450 462-5959
Fax: 450 462-0756